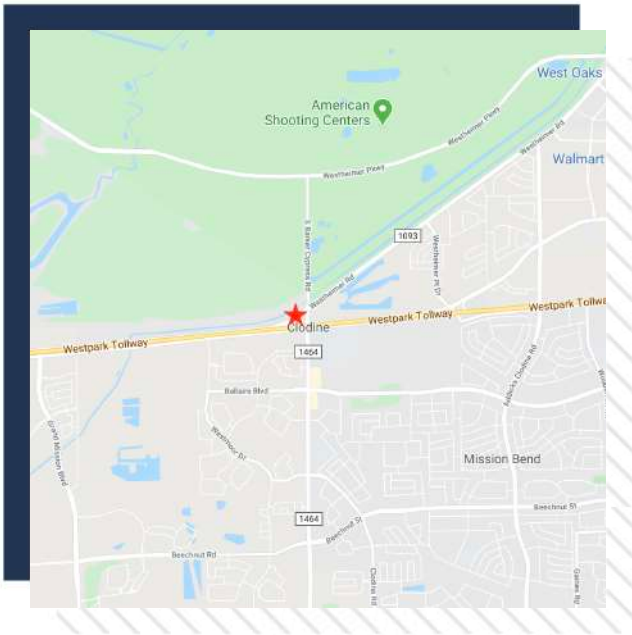


FOR SALE

www.pringroup.com



Corner of FM 1093 & FM 1464 Richmond, TX 77407



Property Details:

- Total of 3.0791 Acres of vacant land
- Property adjacent to West Harris County MUD #4 for possible annexation to access utilities
- Frontage on FM 1093 & FM 1464
- Visibility from Westpark Tollway
- 5 miles east of Grand Parkway (99)
- 3 miles west of Highway 6
- Contact broker for pricing

Steven O'Connor **Marc Lawson** **Austin Keel**

(713) 300-4081

(713) 300-1450

(832) 922-1773

Steven@pringroup.com

Marc@pringroup.com

Austin@pringroup.com

PrinGroup
COMMERCIAL

The information contained herein is obtained from sources believed to be reliable. However, pringroup commercial makes no guarantee, warranties or representations as to the completeness or accuracy thereof. The presentation of this property is submitted subject to errors, omissions, change of price or conditions and is subject to prior sale, lease or withdrawal without notice.

18000 GROESCHKE, SUITE A7
HOUSTON, TX 77084

FOR SALE

www.pringroup.com

Corner of FM 1093 & FM 1464 Richmond, TX 77407



3.0791 Acres of vacant land

Steven O'Connor **Marc Lawson** **Austin Keel**

(713) 300-4081

(713) 300-1450

(832) 922-1773

Steven@pringroup.com

Marc@pringroup.com

Austin@pringroup.com

PrinGroup
COMMERCIAL

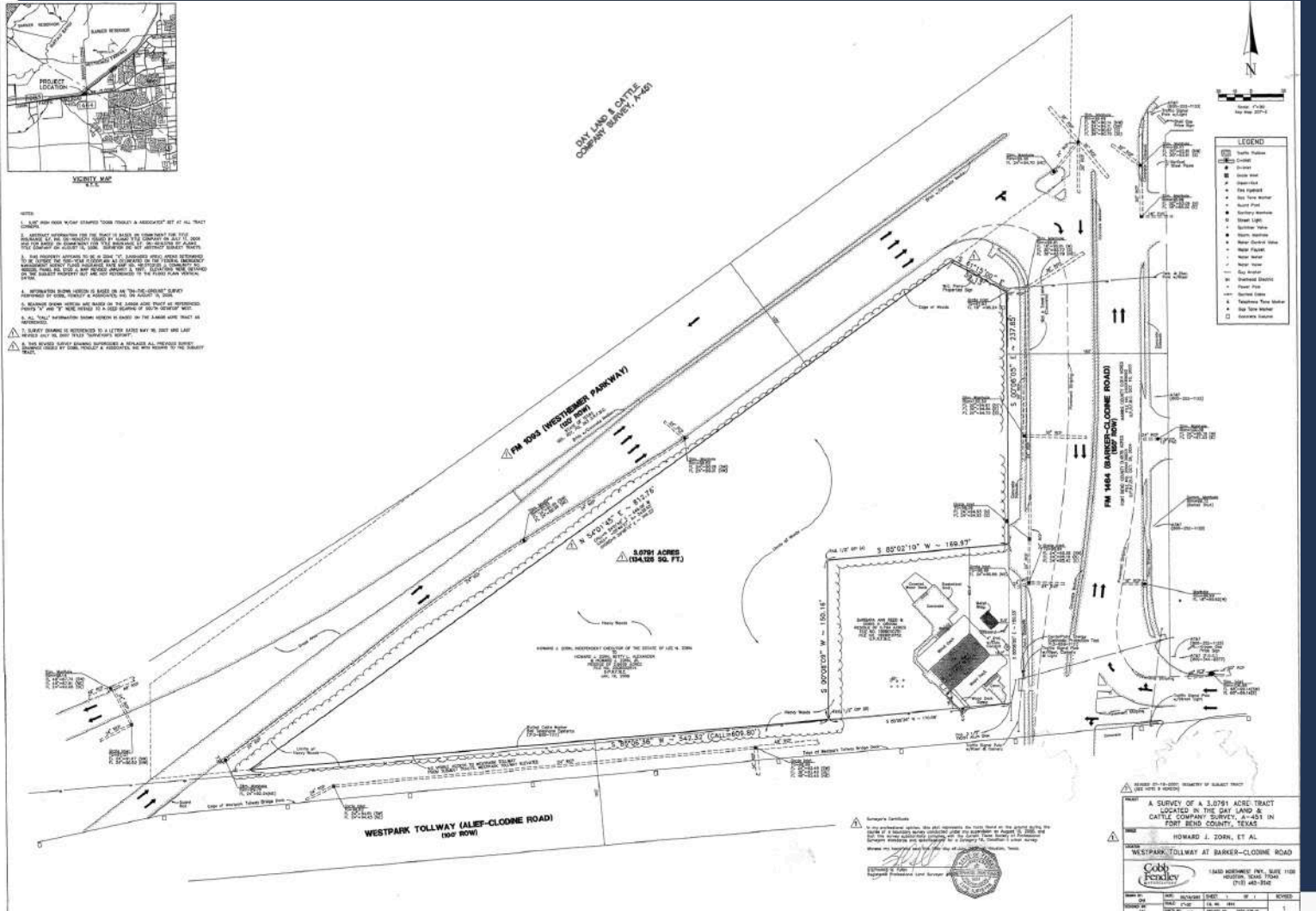
The information contained herein is obtained from sources believed to be reliable. However, pringroup commercial makes no guarantee, warranties or representations as to the completeness or accuracy thereof. The presentation of this property is submitted subject to errors, omissions, change of price or conditions and is subject to prior sale, lease or withdrawal without notice.

18000 GROESCHKE, SUITE A7
HOUSTON, TX 77084

FOR SALE

www.pringroup.com

Corner of FM 1093 & FM 1464 Richmond, TX 77407



Steven O'Connor **Marc Lawson** **Austin Keel**

(713) 300-4081

(713) 300-1450

(832) 922-1773

Steven@pringroup.com

Marc@pringroup.com

Austin@pringroup.com

PrinGroup

COMMERCIAL

The information contained herein is obtained from sources believed to be reliable. However, pringroup commercial makes no guarantee, warranties or representations as to the completeness or accuracy thereof. The presentation of this property is submitted subject to errors, omissions, change of price or conditions and is subject to prior sale, lease or withdrawal without notice.

18000 GROESCHKE, SUITE A7
HOUSTON, TX 77084