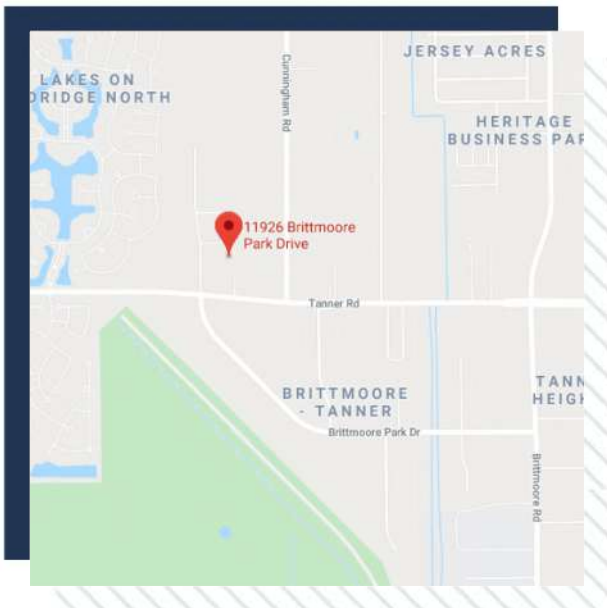


# FOR SALE / LEASE

www.pringroup.com



11906 Brittmoore Park Dr Houston, TX 77406



- **Two Buildings: Total of 76,500sf Corporate Office/Warehouse in NW Houston**
  - 11906 Brittmoore Park: 42,600sf
  - 11926 Brittmoore Park: 33,900sf
- **11906 Brittmoore Park Highlights:**
  - 42,600sf w/ 10,600sf Two Story Office
    - 1<sup>st</sup> Floor: 8,000sf; 2<sup>nd</sup> Floor: 2,600sf
  - Total of 2.3 Acres, Outside Storage
  - (5) OH Doors; (4) Dock-High, (1) Ramp
  - 3PH/480V Electrical Power; 26' Clear Height
  - Located in Brittmoore-Tanner Business Park

**Steven O'Connor**

713-300-4081

steven@pringroup.com

**Marc Lawson**

(713) 300-1450

marc@pringroup.com

**PrinGroup**  
COMMERCIAL

18000 GROESCHKE, SUITE A7  
HOUSTON, TX 77084

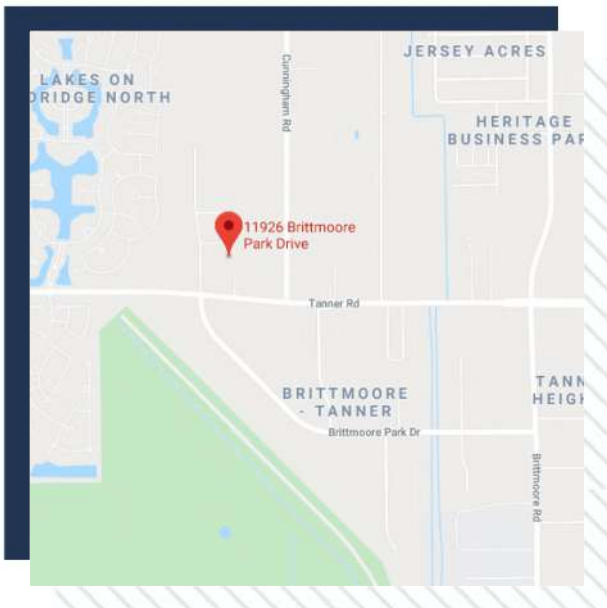
The information contained herein is obtained from sources believed to be reliable. However, pringroup commercial makes no guarantee, warranties or representations as to the completeness or accuracy thereof. The presentation of this property is submitted subject to errors, omissions, change of price or conditions and is subject to prior sale, lease or withdrawal without notice.

# FOR SALE / LEASE

www.pringroup.com



11926 Brittmoore Park Dr Houston, TX 77406



- 33,900sf Office / Warehouse
- Tilt-Wall Construction
- Approximately 3,500sf of Office Space
- Total of 2.02 Acres, Fenced Outside Storage
- (2) Dock-Well, (1) Grade Level Door
- 3PH Heavy Power, 800+ AMPS
- Partially Climate Controlled Warehouse
- Located in Brittmoore-Tanner Business Park

**Steven O'Connor**

713-300-4081

steven@pringroup.com

**Marc Lawson**

(713) 300-1450

marc@pringroup.com

**PrinGroup**  
COMMERCIAL

18000 GROESCHKE, SUITE A7  
HOUSTON, TX 77084

The information contained herein is obtained from sources believed to be reliable. However, pringroup commercial makes no guarantee, warranties or representations as to the completeness or accuracy thereof. The presentation of this property is submitted subject to errors, omissions, change of price or conditions and is subject to prior sale, lease or withdrawal without notice.

# FOR SALE / LEASE

www.pringroup.com

11906 & 11926 Brittmoore Park Drive



- Total of 76,500sf on 4.32ac Corporate Office/Warehouse Facility

**Steven O'Connor**

(713) 300-4081

steven@pringroup.com

**Marc Lawson**

(713) 300-1450

marc@pringroup.com

**PrinGroup**  
COMMERCIAL

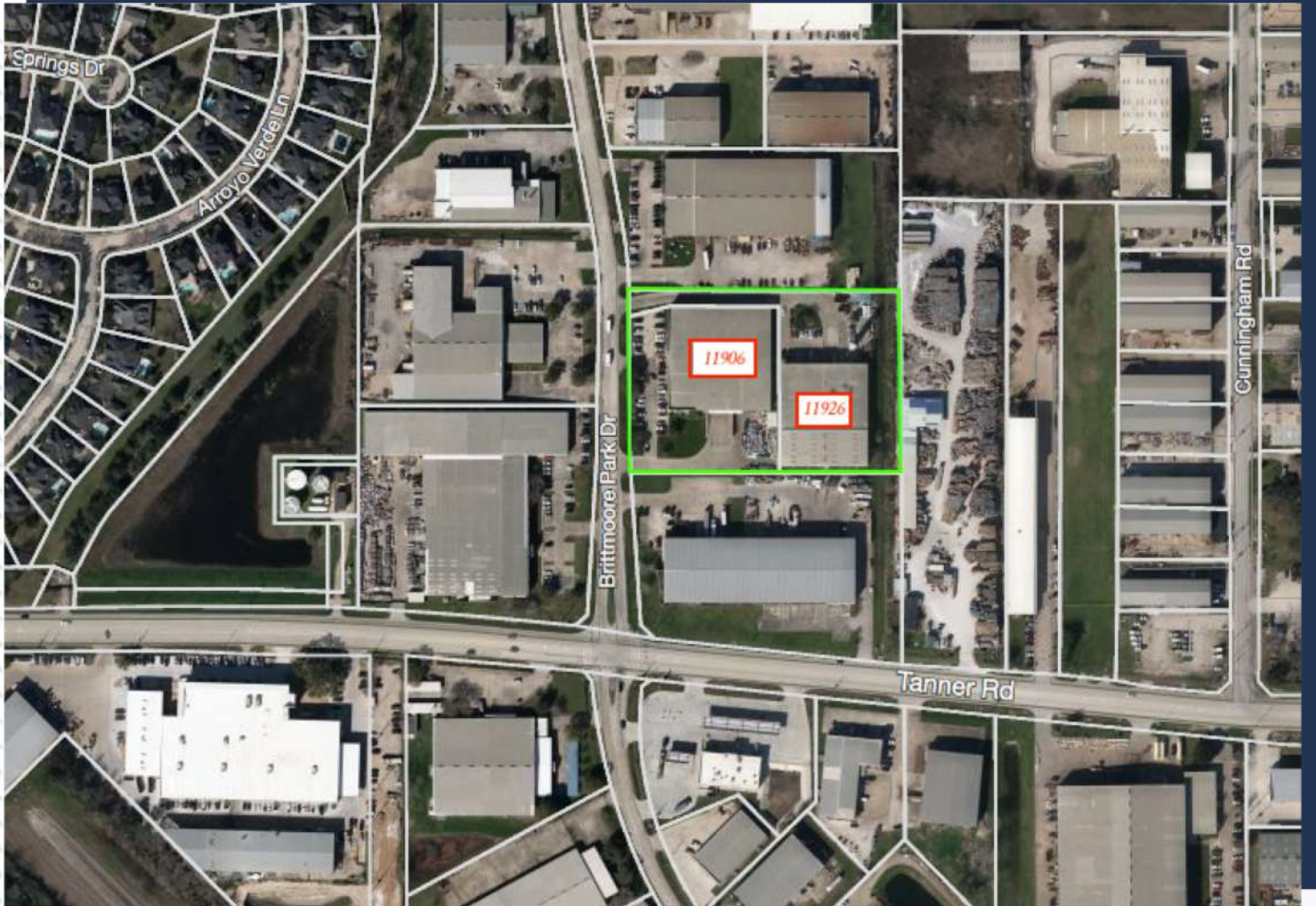
18000 GROESCHKE, SUITE A7  
HOUSTON, TX 77084

The information contained herein is obtained from sources believed to be reliable. However, pringroup commercial makes no guarantee, warranties or representations as to the completeness or accuracy thereof. The presentation of this property is submitted subject to errors, omissions, change of price or conditions and is subject to prior sale, lease or withdrawal without notice.

# FOR SALE / LEASE

www.pringroup.com

11906 & 11926 Brittmoore Park Drive



- 11906 Brittmoore Park Dr: 48,000sf on 2.3 Acres
- 11926 Brittmoore Park Dr: 33,900sf on 2.02 Acres

**Steven O'Connor**

(713) 300-4081

steven@pringroup.com

**Marc Lawson**

(713) 300-1450

marc@pringroup.com

**PrinGroup**  
COMMERCIAL

18000 GROESCHKE, SUITE A7  
HOUSTON, TX 77084

The information contained herein is obtained from sources believed to be reliable. However, pringroup commercial makes no guarantee, warranties or representations as to the completeness or accuracy thereof. The presentation of this property is submitted subject to errors, omissions, change of price or conditions and is subject to prior sale, lease or withdrawal without notice.