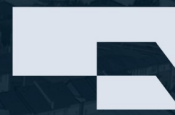


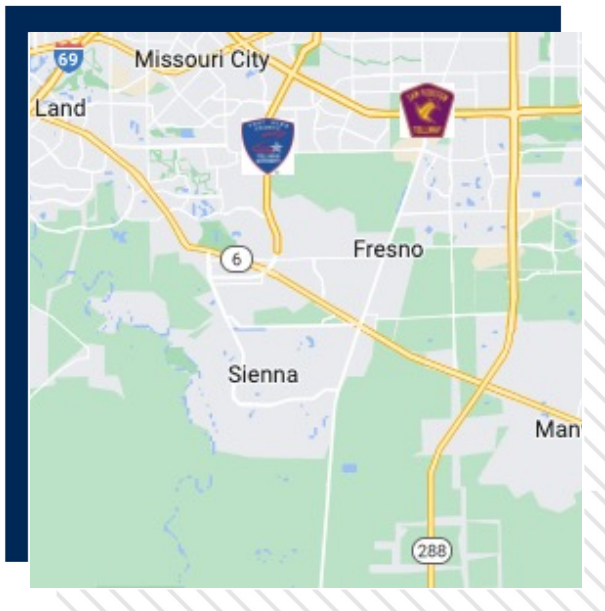
# FOR LEASE



**PrinGroup**  
COMMERCIAL



## Fort Bend Parkway & Lake Olympia Parkway, Missouri City, TX 77459



- Two 1.39 Acre Pads available for Lease
- 10k VPD on Lake Olympia Pkwy & 20k VPD on Fort Bend Parkway
- Outside 100 & 500 Year Flood Plain
- Heavy Growth Area; 14.8% Population Growth over the next 5 Years
- New Amazon Center across the Street with 500+ Employees & 24/7 Operations
- 425 New Homes Directly to the North in Olympia Falls by KB Homes
- No Detention Required
- All Utilities available at Property
- High Quality C-Store Adjacent and Under Construction

**Steven O'Connor**

(713) 300-4081  
steven@pringroup.com

**Marc Lawson**

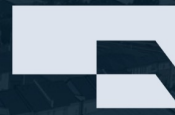
(713) 300-1450  
marc@pringroup.com

The information contained herein is obtained from sources believed to be reliable. However, PrinGroup Commercial makes no guarantee, warranties or representations as to the completeness or accuracy thereof. The presentation of this property is submitted subject to errors, omissions, change of price or conditions and is subject to prior sale, lease or withdrawal without notice.

[www.pringroup.com](http://www.pringroup.com)

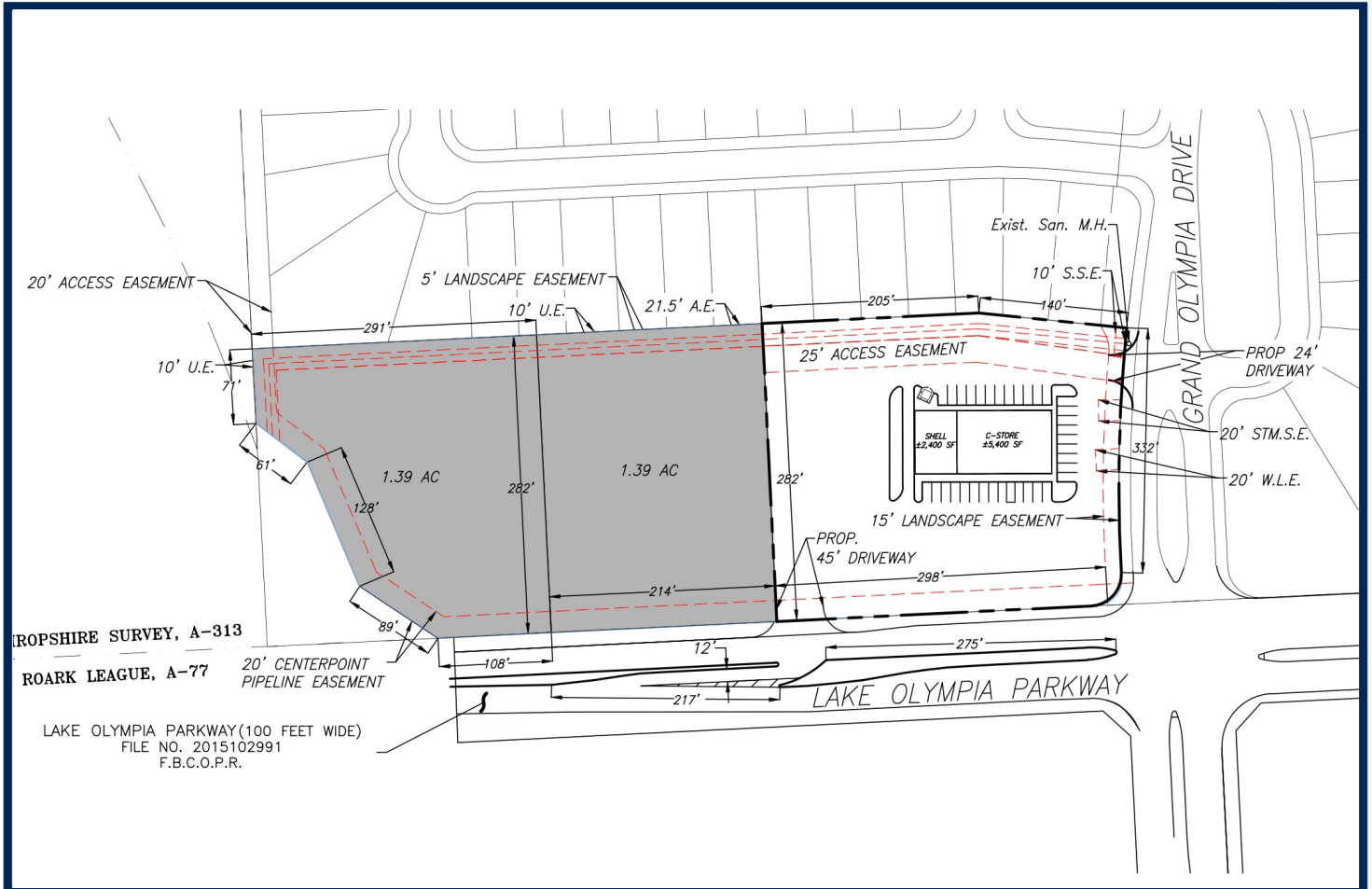


# FOR LEASE



PrinGroup  
COMMERCIAL

## Fort Bend Pkwy & Lake Olympia Pkwy



- Two 1.39 Acre Pads available for Lease

**Steven O'Connor**

(713) 300-4081

steven@pringroup.com

**Marc Lawson**

(713) 300-1450

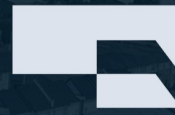
marc@pringroup.com

The information contained herein is obtained from sources believed to be reliable. However, PrinGroup Commercial makes no guarantee, warranties or representations as to the completeness or accuracy thereof. The presentation of this property is submitted subject to errors, omissions, change of price or conditions and is subject to prior sale, lease or withdrawal without notice.

[www.pringroup.com](http://www.pringroup.com)



# FOR LEASE



**PrinGroup**  
COMMERCIAL

## Fort Bend Pkwy & Lake Olympia Pkwy



**Steven O'Connor**

(713) 300-4081

steven@pringroup.com

**Marc Lawson**

(713) 300-1450

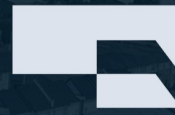
marc@pringroup.com

The information contained herein is obtained from sources believed to be reliable. However, PrinGroup Commercial makes no guarantee, warranties or representations as to the completeness or accuracy thereof. The presentation of this property is submitted subject to errors, omissions, change of price or conditions and is subject to prior sale, lease or withdrawal without notice.

[www.pringroup.com](http://www.pringroup.com)

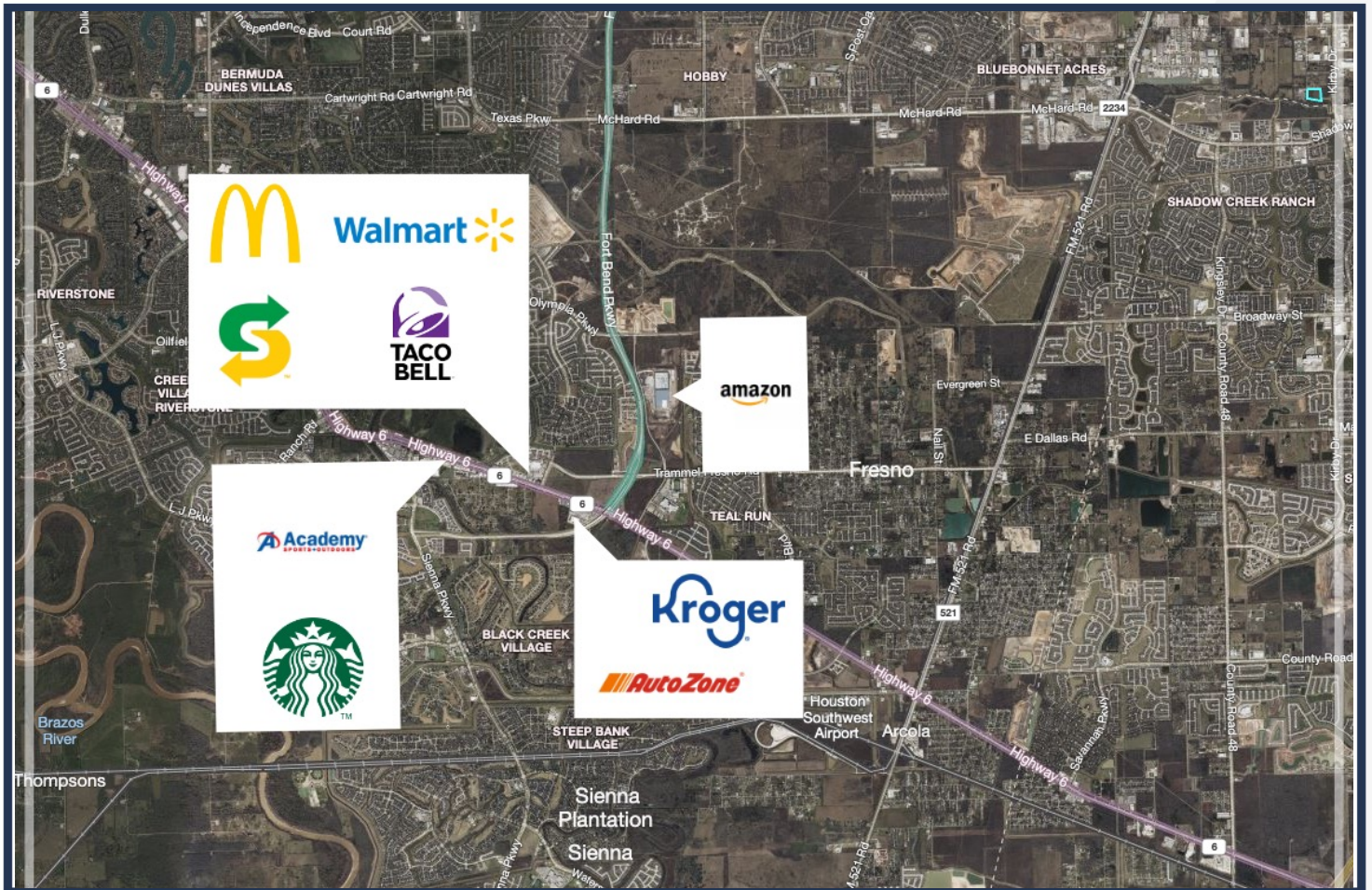


# FOR LEASE



PrinGroup  
COMMERCIAL

## Fort Bend Pkwy & Lake Olympia Pkwy



**Steven O'Connor**

(713) 300-4081

steven@pringroup.com

**Marc Lawson**

(713) 300-1450

marc@pringroup.com

The information contained herein is obtained from sources believed to be reliable. However, PrinGroup Commercial makes no guarantee, warranties or representations as to the completeness or accuracy thereof. The presentation of this property is submitted subject to errors, omissions, change of price or conditions and is subject to prior sale, lease or withdrawal without notice.

[www.pringroup.com](http://www.pringroup.com)